

LIU100 Series

Local Indicating Unit

LIU100 ►►►



Feature

- Stand-alone or System integrated Operation
- Large Display(3.0" high)
- User Settable Decimal Point with Communication or Switch
- Watch dog timer checking function
- Serial Communication(RS422 or RS485) Support
- Pulse Signal Input

Over View

LIU 100 Series Indicator is able to easy read the data by the use of large-sized 7 Segment LED display. The digit number is able to mount one place, so both the cost down and field state are able to easy observe. LIU 100 is usable independently; also user is able to construction system with a high position computer and DCS.

Local Interface Unit

LIU100 ▶▶▶



General

Display Size

7-Segment LED: 3.0-inch high

Display Number

1- Line: 5 digit

Display Update Rate

0.25-second

Decimal Points

Fully programmable with communication or switch

Operation Temperature

-20°C to 55°C(option)

Power

AC 85V to 264V(free voltage)

47Hz to 63Hz

Power Consumption

Pulse Inputs

Frequency Range

0KHz to 5KHz

Signal Type

Open collector or reed switch (relay contact)

K-Factor

Not support. 1-pulse is 1-Counter

Dimension

Size

516(W) * 220(H) * 180(D) mm

Window

220(W) * 120(H) mm

Circuit

Remote Switch input from floating contact

Note: Switches or relays must be floating (not connected to other circuit) and suitable for switching low voltage signal.

Serial Communications

Type

Both RS422 and RS485 are provided.

Note: When using the RS422/485, multi drop communication can be implemented with up to 32 instruments connected to a common bus.

Baud Rate

1200-BPS to 9600-BPS

8-bit / none parity bit



13, Gongdan 1-daero, Siheung-si, Gyeonggi-do, Republic of Korea #512, Samyang Samrt Techno Park
<http://www.ipkplus.com> email : ipk7070@naver.com Tel : 82-31-251-2955 Fax : 82-31-524-1123

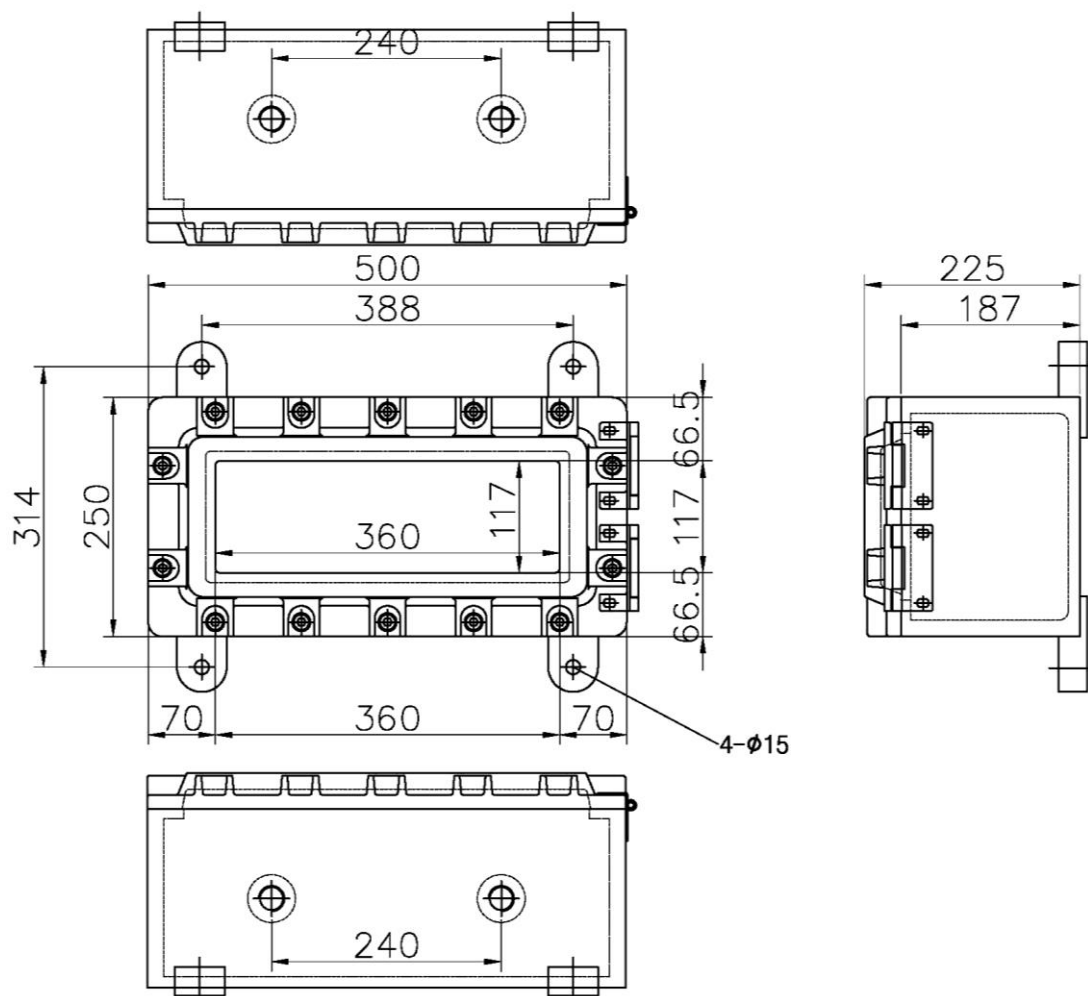
Local Interface Unit

LIU100 ▶▶▶

IPK
Innovation Petro Korea

Dimension

Dimension Type A



Local Interface Unit

LIU100 ▶▶▶



Ordering information

MODEL	Order Code			Description
LIU100	A			TYPE A (Check Dimension)
	B			TYPE B (Check Dimension) – 단종
		P		PULSE Input
		C		RS-422 or RS-485
			E	AC 100 – 220V